

A decorative background at the top of the slide features a network diagram with red and black nodes connected by thin lines, set against a light red gradient.

Impact of Social Sciences & Humanities

4-5 October 2018, Copenhagen

Gemyse 2, 11.30-12.45

Regional Research Infrastructures

Rick Delbridge (chair)

Jenny Hasenfuss

Marieke Schoots



Impact of Social Sciences & Humanities

4-5 October 2018, Copenhagen

**Regional Research
Infrastructures**

Rick Delbridge

*Academic Lead for the Social
Science Research Park, Cardiff
University, Wales, UK*

How to optimize societal impact in regional innovation systems and improve the infrastructure for SSH disciplines

Introduction by the chair: **Rick Delbridge**

Academic Lead for the Social Science Research Park, Cardiff University, Wales, UK

Speaker 1: **Jenny Hasenfuss**

Public & Patient Involvement and Engagement Manager

Speaker 2: **Marieke Schoots**

Programme Manager Impact Program at Tilburg University, the Netherlands

General discussion and Q&A

*The Impact Agenda for Social Sciences & Humanities 2018
4-5 October 2018, Copenhagen, Denmark*



Cardiff University's Innovation System

Professor Rick Delbridge
Dean of Research, Innovation & Enterprise
Cardiff University

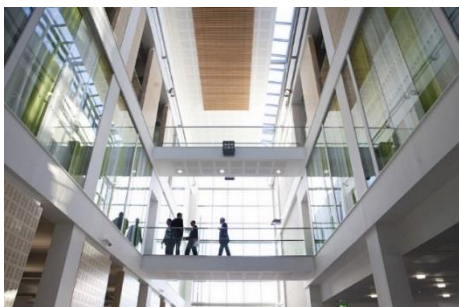
<http://www.cardiff.ac.uk/innovation/campus-investment/innovation-central>





- **Identify and invest in areas of research excellence:**
creation of university research institutes and networks
- **Develop key partnerships to promote collaborative research:**
GW4 and international university partners
- **Developing a distinctive and place-based approach to innovation:**
the Cardiff Innovation System
- **Building broad-based strategic partnerships:**
a more proactive and strategic approach to developing partnerships

What are the expected benefits?



- Translation of research excellence into economic and social benefits and development of an enterprising and innovation-focused culture
- A great vehicle to generate impact, enhancing our academic profile and local, UK and international reputation – responding to global issues
- Better opportunities for student engagement with industry and support for entrepreneurship and enterprise education
- A significant contributor to the city-region and national economic development effort
- Development and enhancement of the University's physical infrastructure to encourage the co-location of RD&I activities of our strategic partners
- Distinctive facilities to foster high-quality collaborations and partnerships with business, industry, government organisations and other HE institutions

Capital developments- Innovation Campus



Plans for about **£300M** capital investment in total.

In 2015, University Council endorsed an investment of £135M in two capital builds on Maindy Campus and the associated “public realm” (public spaces), taking total commitment to over £200M+.

Medicentre – Life sciences innovation centre on Heath Park Campus to develop clinical innovation.

ARUP

B4
BURO FOUR

ch2m



h+k

KIER

Innovation Campus – phase 2 (exp. early 2021)

Innovation Central:

- Social Science Research Park
- Innovation Centre

Translational Research Facility:

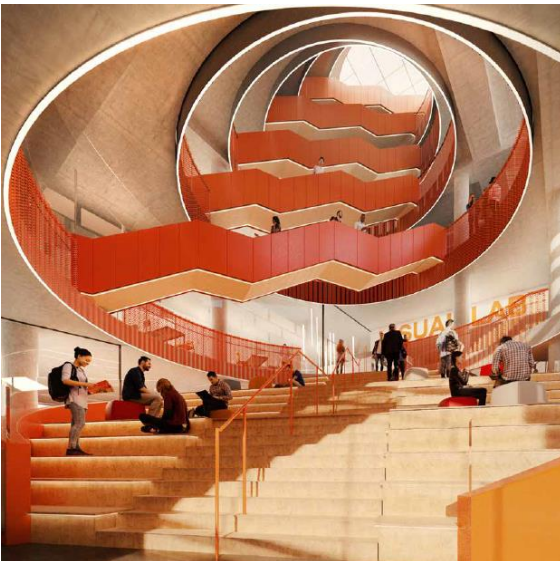
- Cardiff Catalysis Institute
- Institute for Compound Semiconductors



Innovation Central - Innovation Centre



The **Innovation Centre** will be the University's front door to business. It will locate strategic partners alongside start-ups, the University's business engagement, student enterprise and other entrepreneurship activities.



- Recreational spaces
- Exhibition space
- Visualisation suite
- Computational social science lab
- Secure data facilities
- Behavioural lab
- Innovation lab
- 2,900m² of lettable space
- 29 office units
- 8 laboratory units
- Shared facilities – laboratory based
- Hot desking
- Meeting rooms
- Social/catering facilities

Innovation Central - Social Science Research Park (SPARK)



SPARK will co-locate researchers with key stakeholders, supporting and developing innovative knowledge-based clusters (for example, in computational social science, crime and security, civil society, public health and public services innovation).

- Concept developed with strategic partners including Nesta, Cardiff Council, Welsh Government, Office of National Statistics, IBM and the ESRC.
- To generate economic, environmental and social value through co-developing innovative and effective solutions to societal challenges.
- Will create a global leader of translational social science research.



How will SPARK work?



- Physically bring together theorists and practitioners in new ways to spark the ideas that will lead to transformational change
- Prototype solutions to societal challenges at pace, allowing new ideas to be tested in situ
- Produce knowledge and public value which is social science-led and oriented to societal benefit.
- Catalyse more innovation-oriented social science and a more socially-oriented system of innovation.
- Give practitioners new ways of meeting the needs of a changing society



Welsh Economy Research Unit



WISERD



CASCADE: Children's Social Care Research and Development Centre

Centre for Innovation Policy
Research
Cardiff University & Nesta

Crime and Security Research Institute

Sustainable Places Research Institute

Data Innovation Research Institute

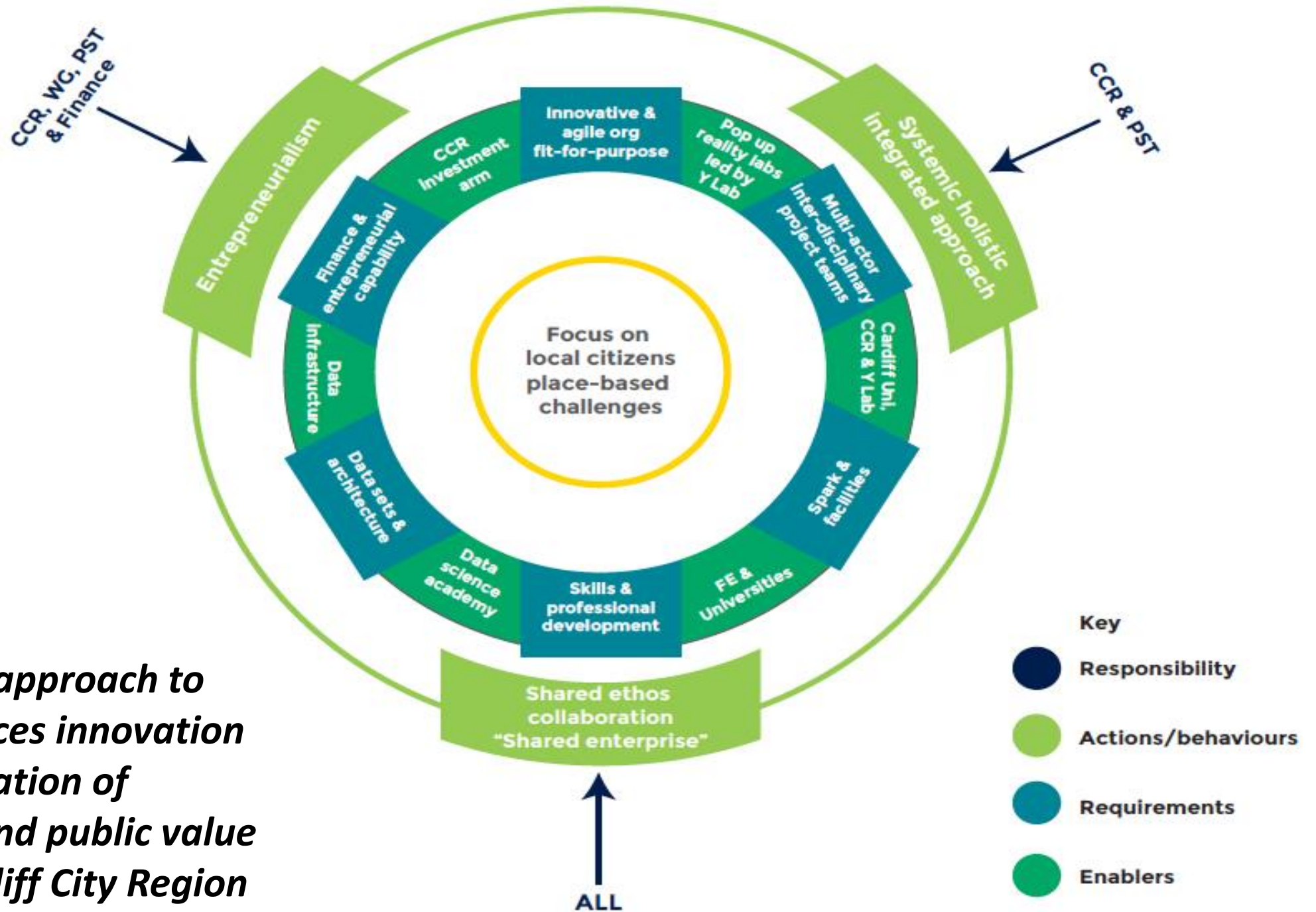


Public Services Innovation
Lab for Wales Labordy
Arloesedd Gwasanaethau
Cyhoeddus Cymru

- Brings together Cardiff University social scientists and Nesta's innovation expertise
- Helps public service organisations change their capacity and systems for supporting the process of innovation and measuring change
- Helps people to develop and test ideas, including through new innovation networks and funds in Wales.
- Studies the patterns, causes and impacts of public service innovation



**Public Services Innovation
Lab for Wales Labordy
Arloesedd Gwasanaethau
Cyhoeddus Cymru**

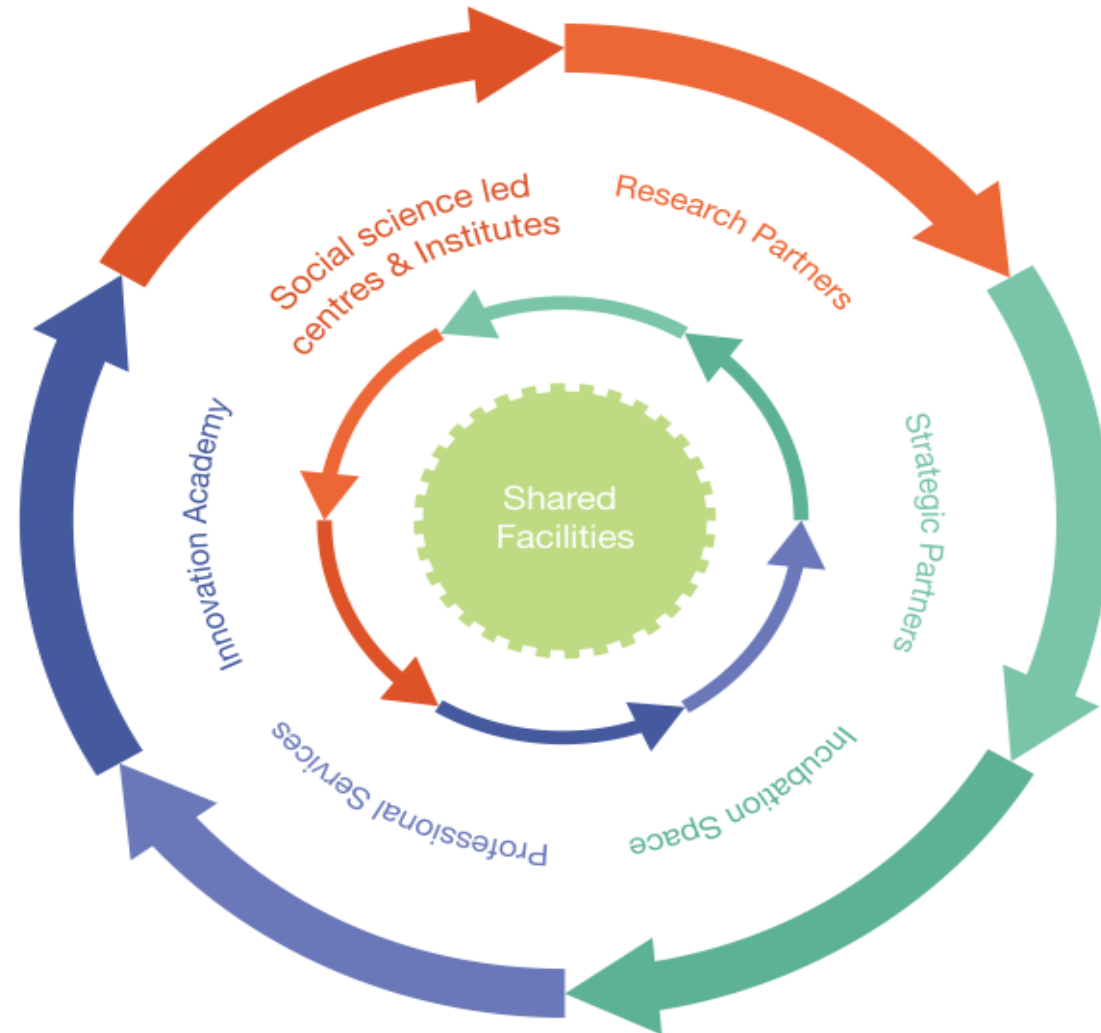


A 'testbed' approach to public services innovation and the creation of economic and public value for the Cardiff City Region

Delivering Societal Problem Focused, Interdisciplinary Research

- Collaboration across heterogeneous sets of actors
- Shared problem definition
- Shared language and theoretical concepts
- Iterative processes of dialogue, research and intervention across research partners
- Investing in a social science-led approach...

The 'Wheel of Innovation'



Key Principles

- Place-based and informed by institutional priorities and local context
- Applied with an inter-disciplinary emphasis on societal challenges and public value
- Collaborative with local, national and international partnerships at the heart
- Importance of social relationships, a sense of shared enterprise and understanding
- Investment in shared facilities
- Ambitious and innovative!



Impact of Social Sciences & Humanities

4-5 October 2018, Copenhagen

**Regional Research
Infrastructures**

Jenny Hasenfuss

Public & Patient Involvement and Engagement Manager

Newcastle University

AESIS

Regional Research Infrastructures

**How to optimise societal impact in regional innovation systems
and improve the infrastructure for SSH disciplines**

A UK perspective on supporting impact from SSH:
Newcastle University Institute for Social Renewal
as an example of practice

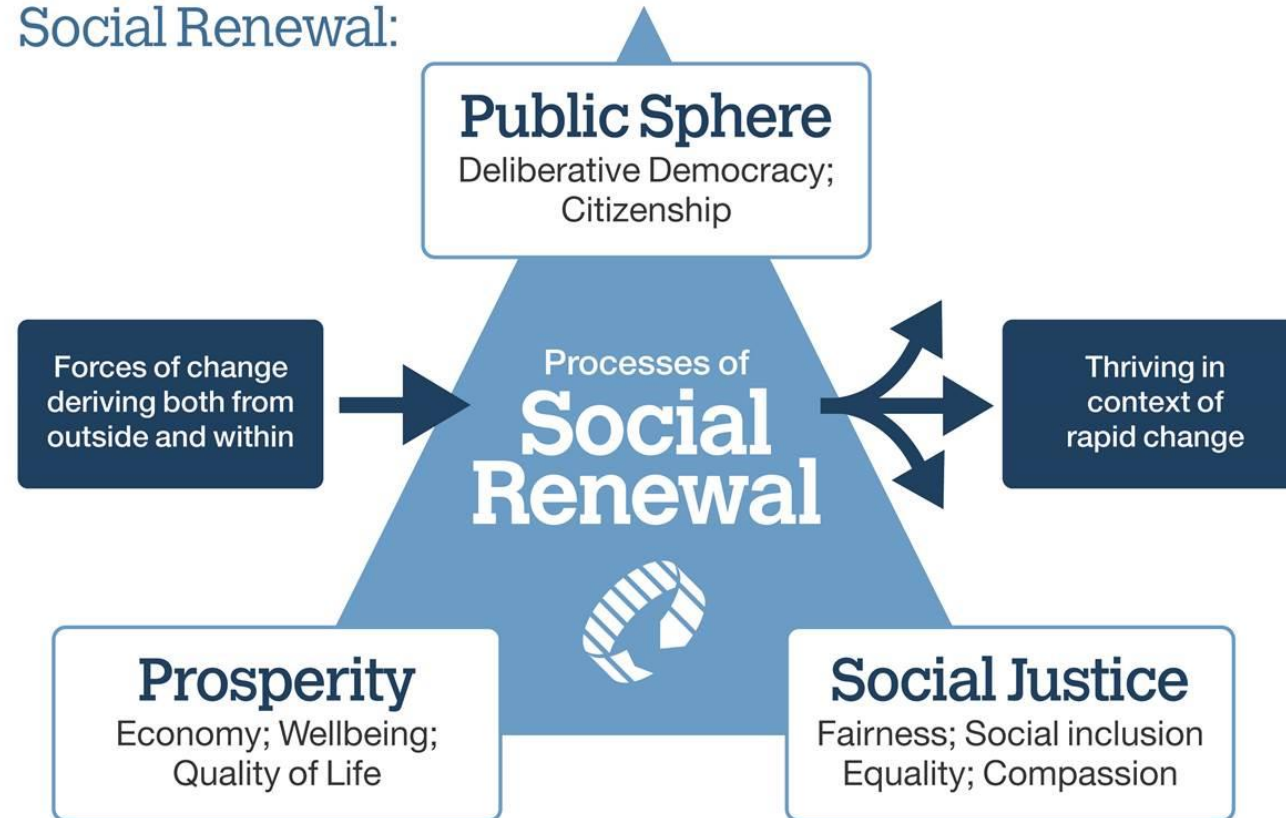
Newcastle Institute for Social Renewal



- Established in autumn 2012
- Priorities include:
 - Continue to support engaged research and engaged teaching
 - Develop strategic external partnerships
 - Bring demonstrator/exemplar projects to fruition
 - Build Newcastle University's reputation in social renewal

Processes of Social Renewal: Place sensitive activity?

Social Renewal:





120 projects

4 policy impact campaigns



73 external partners

10 capacity building events



Key dimensions of NISR:

Developing a 'virtual' infrastructure

- Flexible funding
- Multidisciplinary/inter disciplinary
- Challenge led
- External partners vital & encouraged
- Strategic direction & leadership
- Values and guiding purpose- for academic and professional services teams

Supportive Infrastructure: National organisations with local/regional uptake



National
Co-ordinating
Centre for
Public Engagement

Supportive infrastructure: National organisation with local/regional uptake

- National Coordinating Centre for Public Engagement (NCCPE)
- To support a culture change in the UK higher education sector
- Vision is “of a higher education sector making a vital, strategic and valued contribution to 21st century society through its public engagement activity”

Key reflections:

Creating supportive infrastructures

- **Place relevant/mindful**
- **Impact literacy** (*Dr Julie Bayley*) and galvanising affect of REF Impact Case Studies
- Research **design** and research **communication**- proceed in harmony supported by knowledge exchange ‘believers’ and ‘do-ers’
- **Motivations and ambitions:** Engagement and impact are linked but authenticity of collaboration will always be crucial to making a difference with research

Future considerations

- **Responsible** Research and Innovation (RRI)- to 'respond to' and to be 'trustworthy'
- Must value *all* forms of knowledge
- **Open science** – how to mobilise, incentivise, **empower** and embed?
- How can Universities most successfully serve their place in the 21st Century?

Thank you for listening



Jenny Hasenfuss Email: jenny.hasenfuss@ncl.ac.uk
Public & Patient Involvement and Engagement Manager,
Newcastle University, Newcastle upon Tyne, United Kingdom



Impact of Social Sciences & Humanities

4-5 October 2018, Copenhagen

**Regional Research
Infrastructures**

Marieke Schoots

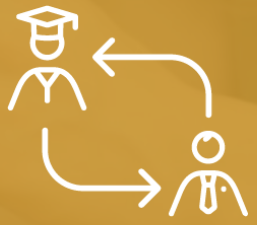
Program Manager Impact

Program at Tilburg University,

Netherlands

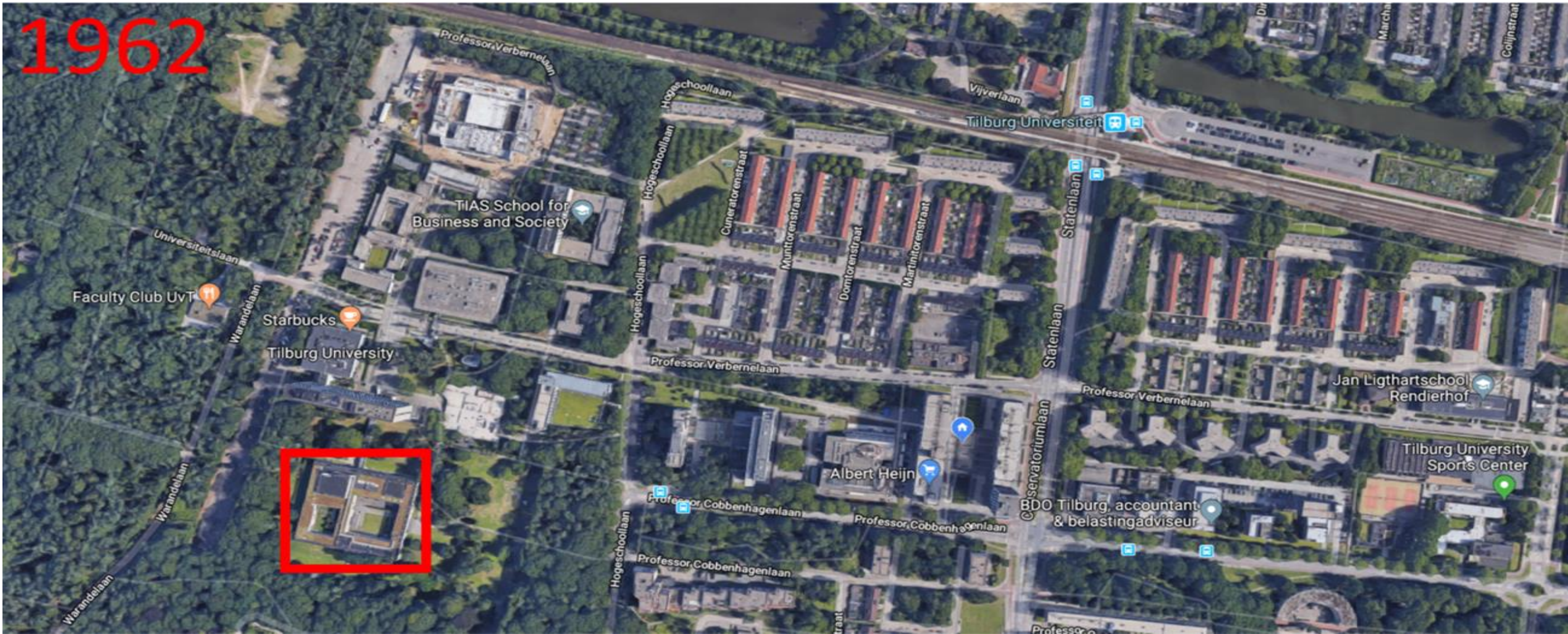


Advancing Society: Impact Program

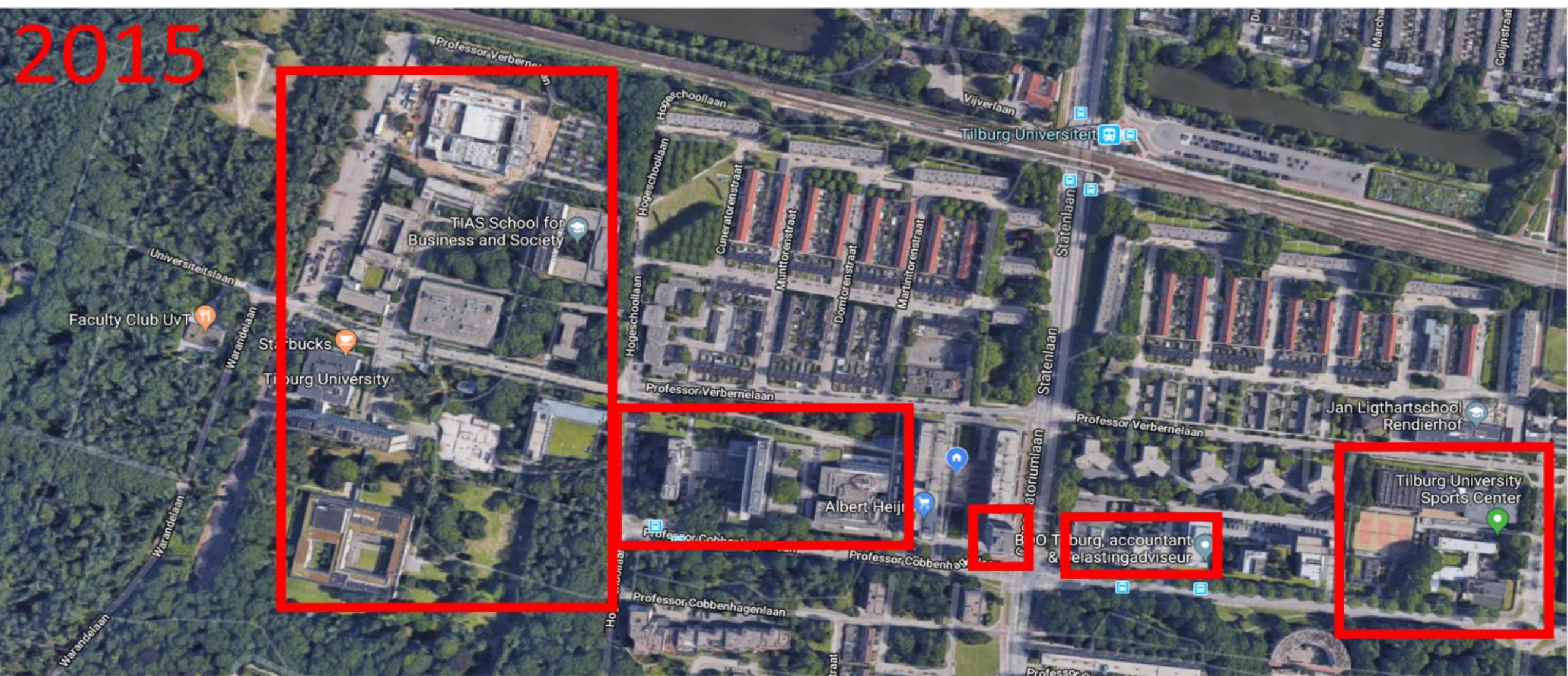


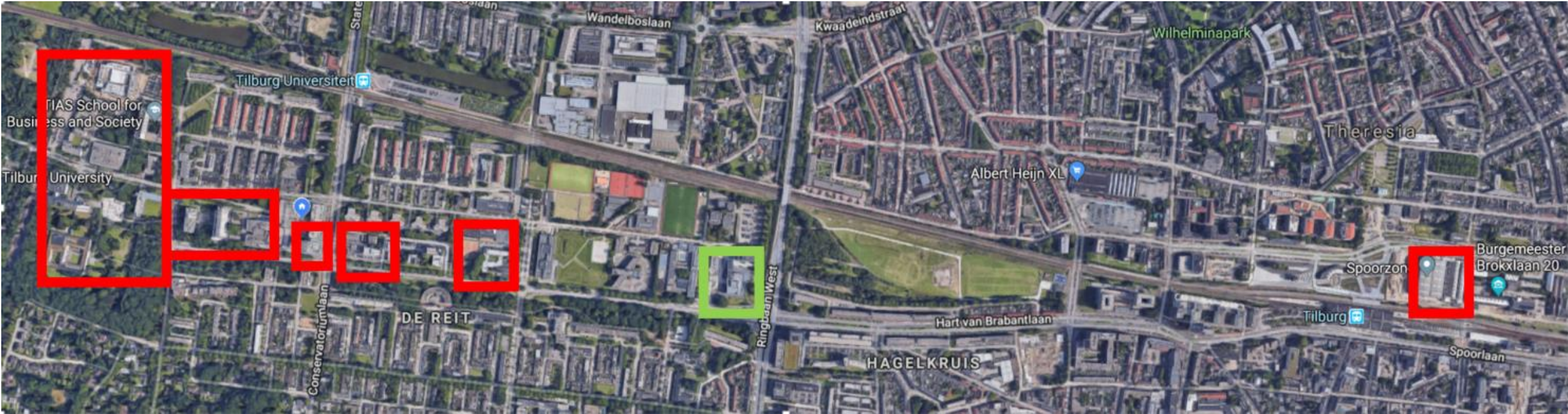


1962



2015

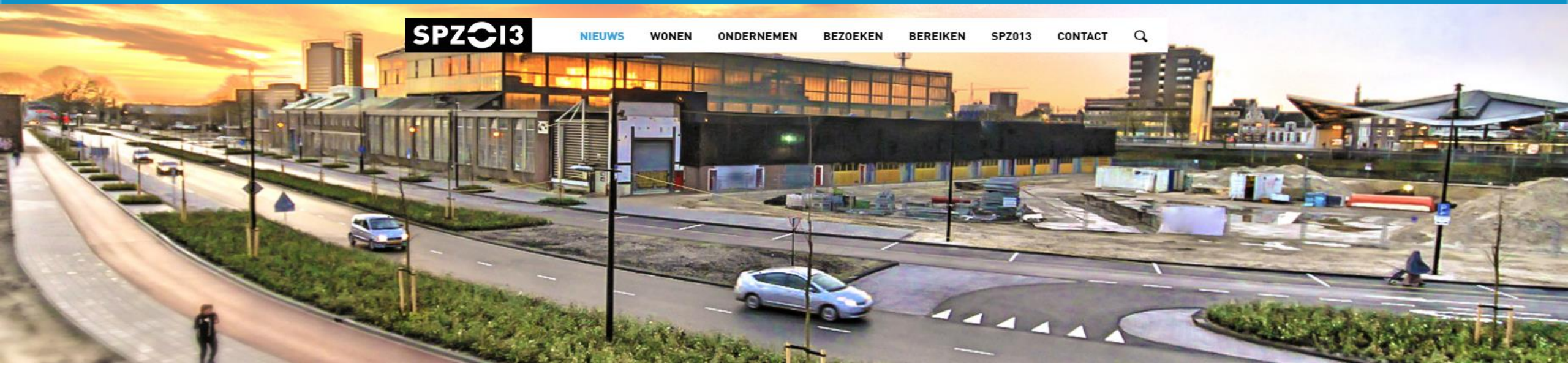




Introducing the Multi Campus



Multi-campus





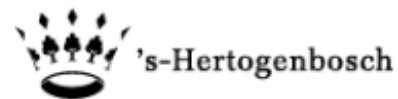
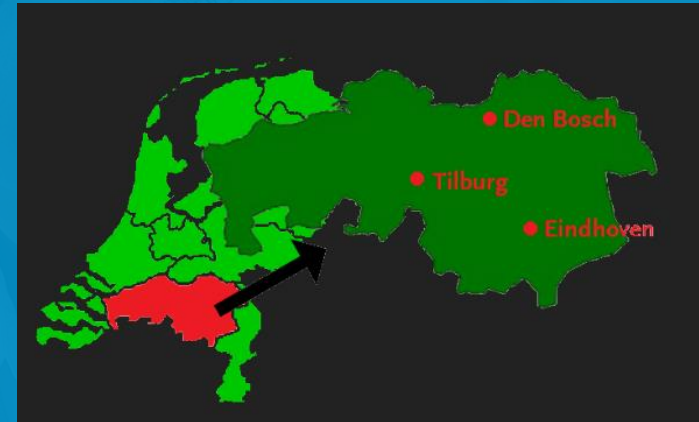
Multi-campus

JADS

Jheronimus
Academy
of Data Science

2018 Responsible Data
Entrepreneurship Award
More info via www.jads.nl/rdeaward

JADS
Jheronimus
Academy
of Data Science



Provincie Noord-Brabant

Impact Program

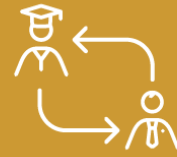


Contribute to improving the world...

...through scientific knowledge

Science with a Soul

Impact Program



Scientific Research

Science
for
science



Science
for
society



A background image showing a group of people in a meeting or collaborative setting. The image is partially obscured by a blue overlay containing text. The people are seen from the back or side, engaged in conversation. The lighting is bright and natural, suggesting an indoor environment with large windows.

The **goals** of the Impact-program are:

- enhancing **collaboration** and **cohesion** between and among research areas → **science-for-science**);
- enhancing **collaboration** between Tilburg University, companies and societal institutions → **science-for-society**;
- **anticipating** and **reacting** to (future) societal developments
- setting up a **clear profile** for Tilburg University by developing a distinct, recognizable and consistent proposition;
- generating **societal and economic impact**



Advancing Society

Digitalization 

Empowering the Resilient Society

Enhancing Health and Wellbeing

Creating Value from Data



World Food Programme
Supply chain optimization

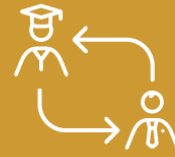
Syria:

2015

25% cost saving

1 million people more fed

Impact Program



Regional Innovation System in place through triple helix organisations



MIDPOINT
BRABANT 

Brainport Network



Impact Program



Local
Partners:



GEMEENTE TILBURG



de Bibliotheek
Midden-Brabant



**DE PERSGROEP
NEDERLAND**



Impact Program





Impact of Social Sciences & Humanities

4-5 October 2018, Copenhagen

**Regional Research
Infrastructures**

Panel discussion & Q&A

Rick Delbridge (Chair)

Jenny Hasenfuss

Marieke Schoots



Impact of Social Sciences & Humanities

4-5 October 2018, Copenhagen

Regional Research Infrastructures

Chair: Rick Delbridge

Academic Lead for the Social Science Research Park, Cardiff University, Wales, UK

Type your recommendation here



Impact of Social Sciences & Humanities

4-5 October 2018, Copenhagen

Next up:

12.45-13.45 Lunch

13.45-15.00 Indicators of SSH Impact

Institutional assessment

Measurement tools

Public engagement

Lumbye Hall

Gemyse 2

Gemyse 1

HC Andersen castle